

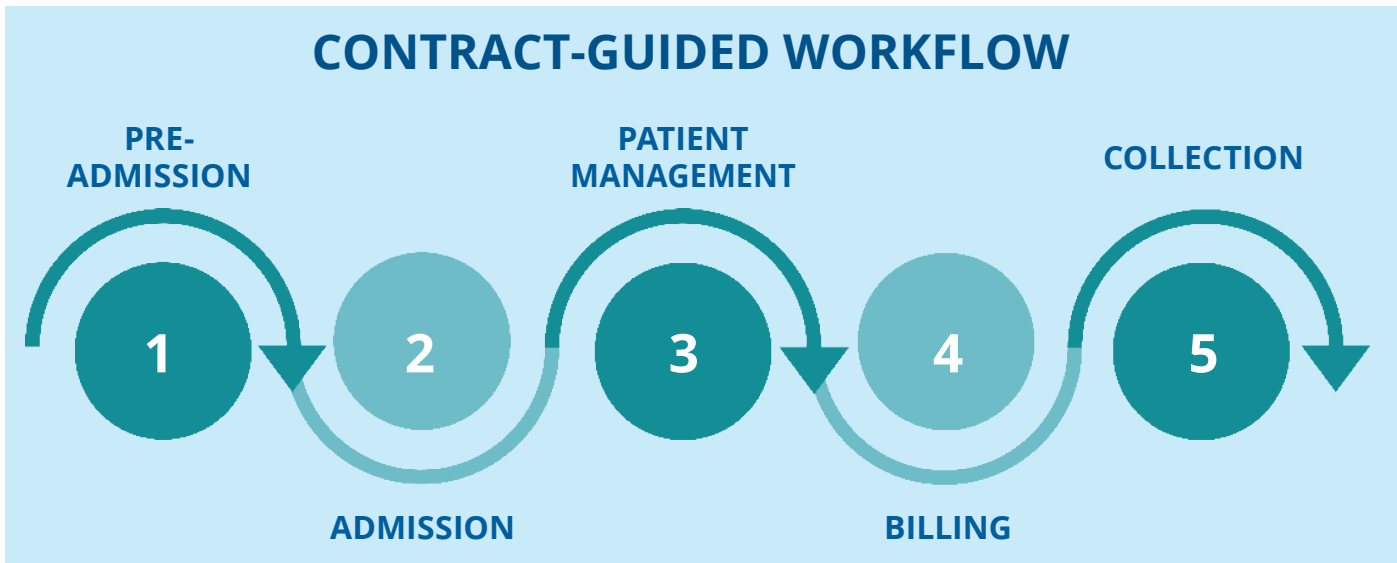


managed care
MASTER
Case Manager Advocates

Contract and Case Management

Managed care is changing, are you?

If you're not, chances are you're not getting paid fairly for services rendered. Using our Managed Care MASTER app makes it easy to organize various contracts into automated case management workflows for staff.



With web-based data at our fingertips, we save up to 30 minutes per update – and, we've increased revenue approximately \$1,200 per stay.

– Symphony Care Network

Since 2003

For nearly two decades, we've delivered integrated data and tech solutions to senior care operators across 10,000+ U.S.-based facilities.

CARE DATA INTEGRATION

Contracts



EHRs



Rx Costs



Therapy



CRM



Technology Can Help

EXECUTIVE DASHBOARD

Get a high-level, multi-facility snapshot



CONTRACT ALERTS

Notify staff to take cost-saving action

STAY INFO
INSURANCE Insurance Company: BlueCross BlueShield Illinois Risk Payer ID#: BlueCross BlueShield Illinois Risk ID#: 100 Line of Business: Commercial Coverage Period: 12/01/20
AUTHORIZATIONS
01/20/21 - 02/29/21 Skilled Nursing Level I - BlueCross BlueShield Illinois 12/15/20 - 01/29/21 Skilled Nursing Level I - BlueCross BlueShield Illinois 12/09/20 - 12/14/20 Skilled Nursing Level I - BlueCross BlueShield Illinois 06/25/19 - 12/07/20 Skilled Nursing Level I - BlueCross BlueShield Illinois
UPDATE LOG
02/03/21 01/20/21 12/14/20

STAFF WORKFLOW

Easily track levels and authorizations

CONTRACT TERMS	SECTION	PAGE	COMMENTS	OVERLAP/PAIDMENT	SECTION	PAGE
1/1/2020	1	1	Rate Schedule		0.10	10
1/1/2020	2	2	Rate Schedule			
1/1/2020	3	3	Rate Schedule			
1/1/2020	4	4	Rate Schedule			
1/1/2020	5	5	Rate Schedule			
1/1/2020	6	6	Rate Schedule			
1/1/2020	7	7	Rate Schedule			
1/1/2020	8	8	Rate Schedule			
1/1/2020	9	9	Rate Schedule			
1/1/2020	10	10	Rate Schedule			

CONTRACT SUMMARY

Generate PDF summarizing key provisions.

COST OUT FORM			
Room and Board	1.00	91.00	91.00
Skilled Services	1.00	176.85	176.85
PT	45.00	1.05	47.25
OT	30.00	1.03	30.90
31	0.00	1.12	0.00
Laboratory Tests	1.00	20.00	20.00
Pharmacy PPD	1.00	35.00	35.00
ARI (BY 30 MCTARI) IT	1.00	40.63	40.63
Profit Margin - LOA			0
Profit Margin - Contract			5
Option A - If Contracted Patient			
Total cost per day			381.63
Contracted Daily Rate			415.69
Difference between Total Cost vs contracted daily rate			34.06

PRE-ADMIT COST OUT

Estimate total cost of patient intake



A Prime Care Technologies affiliate

Contact Us

6650 Sugarloaf Parkway, #400 | Duluth, GA 30097

(877) 644-2306 | sales@primecaretech.com | www.primcaretech.com



MCM - MAY 2022